

LESSON 36: ENVIRONMENTAL ETHICS



JACK HUNTER
j.hunter@nsc.ac.uk

Objectives

- To re-cap on Environmental Ethics and Gaia Theory.
- To introduce the concept of Deep Ecology, and the work of the philosopher Arne Naess.

**Do you remember
what environmental
ethics means?**

**Have a go at writing a
short definition.**

Environmental ethics is the discipline in philosophy that studies the moral relationship of human beings to, and also the value and moral status of, the environment and its non-human contents.

The Environment

- Draw up a table showing the 'human' and 'non-human' parts of the environment.

Human	Non-Human

The Environment

- Draw up a table showing the 'human' and 'non-human' parts of the environment.
- **What does this tell you about the place and status of human beings within the environment?**

Human	Non-Human

All of this makes up the
‘Geosphere’ and the
‘Biosphere.’

Have a go at writing short
definitions of these terms,
then swap with you partner.

What is Gaia theory?

- Write your thoughts out on the post-it notes, then stick them on the whiteboard.



Ecology

- Any idea what it is?

Ecology

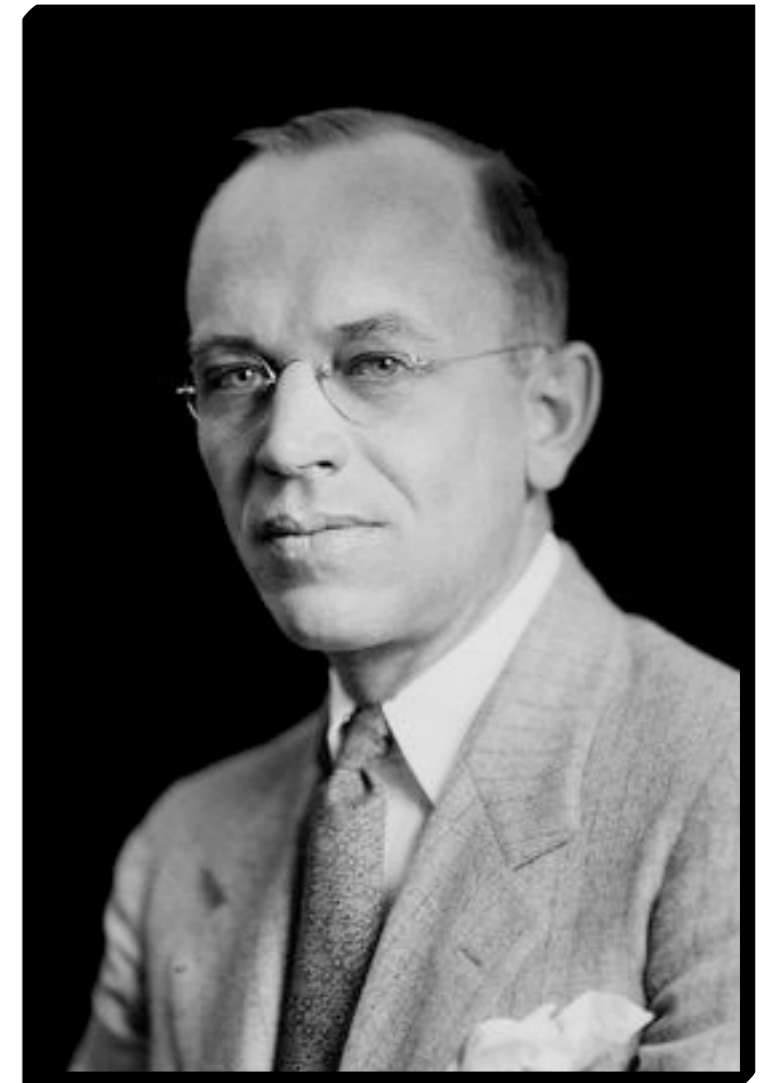
- The branch of biology that deals with the relations of organisms to one another and to their physical surroundings.

Ecology

- The branch of biology that deals with the relations of organisms to one another and to their physical surroundings.
- The political movement that seeks to protect the environment, especially from pollution.

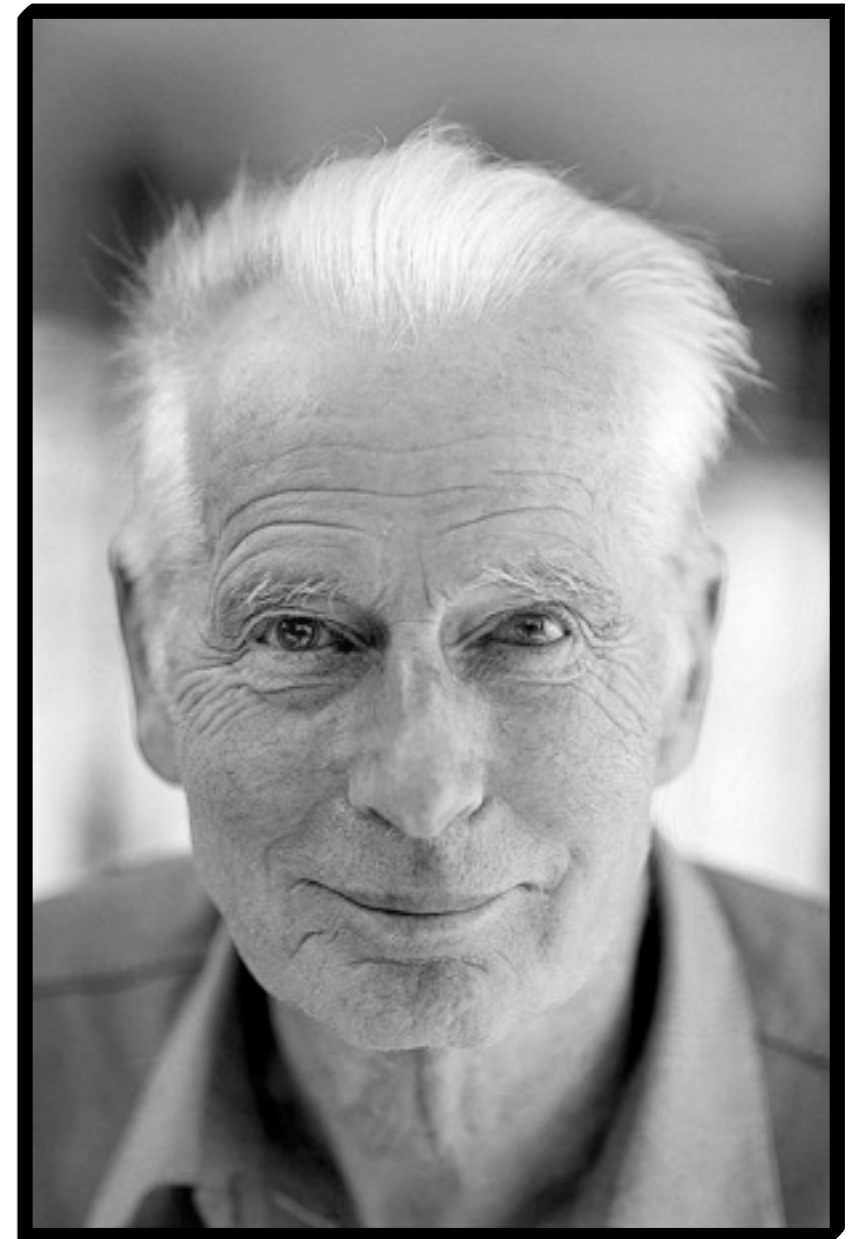
Deep Ecology

- The concept of Deep Ecology emerged from the writings of American conservationist Aldo Leopold (1887-1948).
- Leopold sought to expand the moral sphere to include soils, waters, plants and animals.
- This is a **Holistic** perspective.



Deep Ecology

- ‘Deep Ecology’ was further developed by the Norwegian philosopher Arne Naess (1912-2009).
- Read through the sheet on Deep Ecology, and answer the questions in your own words.



The Call of the Mountain: Arne Naess and the Deep Ecology Movement

Make notes.

We want to know who Arne Naess is, what Deep Ecology is and how it relates to major issues in Environmental ethics.

<https://www.youtube.com/watch?v=Wf3cXTAqS2M>

Homework

- Do some research on the Kyoto Protocol.
- What is it?
- Why was it established?
- What does it do?
- Do you think it has worked?